



PLAN

DRAFT

PUBLIC COMMUNICATIONS PLAN FOR THE FORMER SATRALLOY SITE

Jefferson County, Ohio

Submitted To: Ohio Environmental Protection Agency
2195 Front Street
Logan, Ohio 43138

Submitted By: Cyprus Amax Minerals Company

Prepared By: Golder Associates Inc.
1335 Dublin Road, Suite 126-D
Columbus, Ohio

April 3, 2020

Project No. 123-93309-07

A world of
capabilities
delivered locally





Table of Contents

1.0	INTRODUCTION.....	2
1.1	Purpose of this Document	2
1.2	Contact Information.....	2
1.2.1	Ohio Environmental Protection Agency (OEPA)	2
1.2.2	Cyprus Amax Minerals Company	2
1.3	Site Background	2
2.0	OVERVIEW OF CLEANUP LAWS AND REGULATIONS.....	5
2.1	Cleanup Law	5
2.2	Applicable or Relevant and Appropriate Requirements (ARARs)	5
2.3	Site Permits	5
3.0	SOURCES OF INFORMATION ON THE SITE	6
3.1	Public Document Repository.....	6
3.2	OEPA Website	6
3.3	Public Notices.....	6
4.0	PUBLIC PARTICIPATION.....	7
4.1	Public Meetings.....	7
4.2	Public Comment on Documents	7

List of Figures

Figure 1 Site Location



1.0 INTRODUCTION

1.1 Purpose of this Document

This plan describes how the public will be kept informed about activities at the Former Satralloy Site (the Site) located at 4243 County Road 74 in Mingo Junction, Ohio (Figure 1). Site investigation and remediation is being conducted at the Site by Cyprus Amax Minerals Company (Cyprus Amax, a wholly owned subsidiary of Freeport-McMoRan Inc.) under oversight by the Ohio Environmental Protection Agency (OEPA).

1.2 Contact Information

1.2.1 *Ohio Environmental Protection Agency (OEPA)*

Shannon Cook
Ohio Environmental Protection Agency
Southeast District Office
2195 Front Street
Logan, Ohio 43138

Phone: (740) 385-8501
Fax: (740) 385-6490

1.2.2 *Cyprus Amax Minerals Company*

Barbara Nielsen
Cyprus Amax Minerals Company
333 N. Central Avenue
Phoenix, AZ 85004

Phone: (480) 313-2895
Fax: (602) 366-7307

1.3 Site Background

The Site consists of approximately 333.5 acres of land and includes an abandoned ferrochromium alloy processing plant. The Site is located in Cross Creek Township, Jefferson County, Ohio, approximately four



miles south of Steubenville, Ohio. The Site is bordered on the north, west, and south by Cross Creek, a perennial stream that discharges into the Ohio River.

The Site contains two production mill buildings, an office building, baghouses, and a number of ancillary support buildings. The mill produced chromium and ferrochromium from chromium ores by smelting in four electric arc furnaces housed in the two mill buildings. The furnaces were shut down in 1982 when primary ore processing operations ceased.

The topography of the Site rises about 500 feet above the lowland floodplain of Cross Creek to a plateau surface. The eastern portion of the Site consists of a relatively flat lowland area (Plant Area), while the western portion of the Site is an upland plateau used for process material placement, primarily slag, from chromium ore processing operations. In the north, the Site is largely an upland plateau and consists of heavily wooded areas with slag from former Site operations. The upland area also contains abandoned coal mine workings from the underground room-and-pillar Kolmont No.1 Coal Mine operated by the Wayne Coal Company in the 1930s. The upland area includes a 5.3-acre area where chromite ore was stockpiled as part of the U.S. Government's strategic mineral stockpile program.

The Site was initially developed in 1958 by the Vanadium Corporation of America ("VCA"). In 1967, VCA merged with the Foote Mineral Company ("Foote Minerals"). In 1973, Foote Minerals sold the Site to Satralloy, Inc., with the exception of the 5.3-acre parcel leased to the U.S. Government and supplies of slag which had accumulated at the plant during operation. Foote Minerals was sold in 1998 to Chemetall GmbH, and renamed to Chemetall Foote Corporation.

Operations continued at the Site under the ownership of Satralloy, Inc. from 1974 until 1982, when the electric arc furnaces were shut down. In 1982, Satra Concentrates, Inc. began operations at the Site. It is believed that Satra Concentrates, Inc. and Satralloy, Inc. had common ownership. Satra Concentrates primarily reprocessed existing high-carbon slag to separate residual chromium from spent slag. Satra Concentrates ceased operations at the Site in 1994.

The Site property owned by Satralloy was then sold in 1994 by Jefferson County for unpaid property taxes to Ms. Catherine Glorious at a sheriff's auction. Ms. Glorious passed away in April 2001. The Site was resold at auction for unpaid property taxes to Cyprus Amax on May 17, 2010.

A Consent Order for Preliminary Injunction (COPI) (State of Ohio, 2010) between Cyprus Amax, Chemetall Foote Corporation, and the State of Ohio to perform a Remedial Investigation / Feasibility Study (RI/FS) for the Site was entered on November 3, 2010. The COPI required, among other things, certain interim action



April 2020

DRAFT

4

123-93309-07

activities related to baghouse dust and site security. Implementation of a final remedy at the Site will require a separate Consent Order.

The 5.3-acre parcel owned by Chemetall Foote Corporation (later renamed Rockwood Lithium, Inc) was sold in auction for unpaid property taxes in 2015 to Mr. Gary Smith. In 2015, Rockwood Lithium, Inc. changed its name to Albemarle U.S., Inc.



2.0 OVERVIEW OF CLEANUP LAWS AND REGULATIONS

2.1 Cleanup Law

Under the COPI, the work at the former Satralloy Site is being performed in a manner consistent with the National Contingency Plan (NCP) promulgated pursuant to the Comprehensive Environmental Response, Compensation and Liability Act of 1980 (CERCLA). CERCLA was enacted for the specific purpose of facilitating the remediation of abandoned industrial sites across the country. The primary goal of CERCLA is to ensure that abandoned industrial sites are cleaned up to a level that is protective of human health and the environment. A secondary goal of CERCLA is to return abandoned sites to productive use after they have been remediated.

2.2 Applicable or Relevant and Appropriate Requirements (ARARs)

Under CERCLA, cleanups must not only be protective of human health and the environment, but must be “relevant and appropriate” to the circumstances as well. These goals are met by requiring that cleanups comply with certain “applicable or relevant and appropriate requirements” (ARARs). “Applicable” requirements are those cleanup standards and other substantive requirements promulgated under federal or state law that apply specifically to the cleanup of a particular type of substance at an abandoned industrial site. “Relevant and Appropriate” requirements are those cleanup standards and other substantive requirements that, while not legally applicable to a particular situation, address conditions that are sufficiently similar to those found at a given site such that they are well-suited for use in the remediation. The ARARs for the cleanup of the former Satralloy Site will be determined in cooperation with the OEPA based on the results of the investigation of the property.

2.3 Site Permits

The Site maintains the following permits:

- Industrial Storm Water General Permit (OHR000006)
- Construction Storm Water General Permit (OHR000005)
- Air permit-to-install and operate 400 TPH crusher (P0114196)
- Air permit-to-install and operate unpaved roadways and parking areas (P0113889)
- Clean Water Act (CWA) 404 Nationwide Permit 38



3.0 SOURCES OF INFORMATION ON THE SITE

3.1 Public Document Repository

A repository of documents for public access is maintained electronically at:

www.formersatralloysite.com

In addition, Cyprus Amax has arranged for public access to the electronic documents near the Site at the Steubenville Library, 407 S. 4th Street, Steubenville, Ohio 43952, (740) 282-9782, via electronic device purchased by Cyprus Amax and placed at the Steubenville Library for public use.

3.2 OEPA Website

General information about OEPA programs for site investigation and remediation is available online at:

<https://www.epa.state.oh.us/>

Information on the site cleanup program and some information on specific sites is available online at:

<https://epa.ohio.gov/derr/remedial/remedial.aspx#1712610297-site-highlights>

Questions regarding OEPA's website can be directed to Mr. Shannon Cook of OEPA at (740) 385-8501.

3.3 Public Notices

During specific stages of the work, OEPA will provide notices about public comment periods to the public. These notices will provide general information about the Site, contact information for submitting comments, and times and locations of public meetings or hearings.



4.0 PUBLIC PARTICIPATION

Members of the public may ask questions of, submit informal comments to, or share information germane to the Site and the associated regulatory process at any time to OEPA. Interested parties do not need to wait for a formal public comment period to contact OEPA.

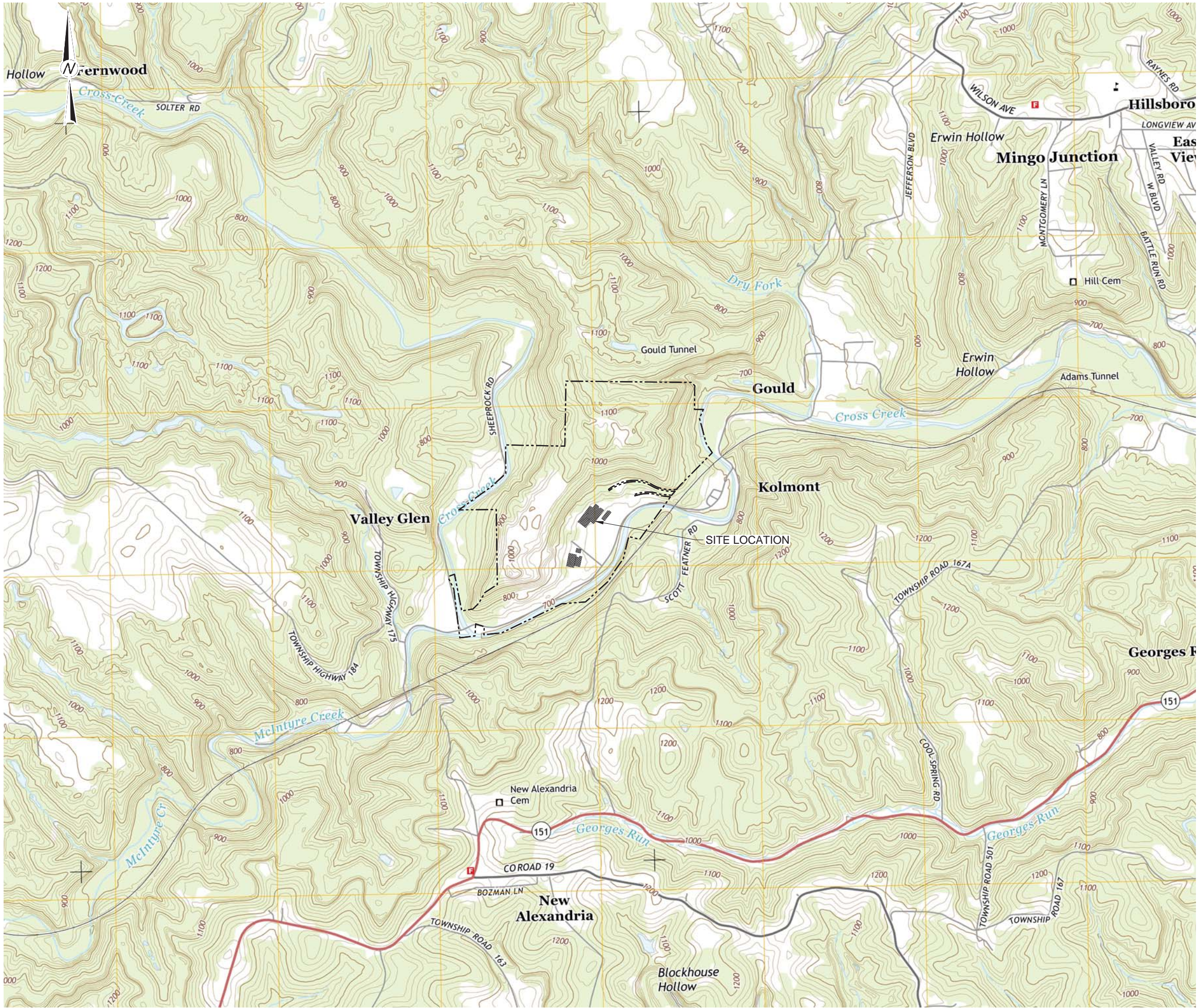
4.1 Public Meetings

Meetings with the public may be held from time to time. These may be formal meetings with a presentation followed by question-and-answer, or open house format for informal sharing and discussion. Notice of such meetings and open houses will be posted on the public repository web site (see web address above) and in the local newspaper.

4.2 Public Comment on Documents

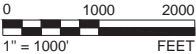
To be included in the Site record, comments must be submitted to OEPA. Following a comment period on a proposed remedy, OEPA will publish the input received and respond to significant comments and questions. If the comments result in significant changes to the proposed remedy, then the proposed remedy will be revised and re-issued for additional public review and comment. If the comments do not result in significant changes, then OEPA will issue a final remedy document.

FIGURES



REFERENCE(S)
1.) MAP TAKEN FROM U.S.G.S. 7.5 MINUTE QUADRANGLE OF STEUBENVILLE WEST, OHIO, DATED 2013.

DRAFT



CLIENT
CYPRUS AMAX MINERALS COMPANY

PROJECT
SATRALLOY REMEDIAL INVESTIGATION

TITLE
SITE LOCATION MAP

CONSULTANT	YYYY-MM-DD	2016-10-25
	DESIGNED	
	PREPARED	REDMOND
	REVIEWED	LH
	APPROVED	LH



PROJECT NO. 1239330902 CONTROL 600 REV. 1 FIGURE 1

At Golder Associates we strive to be the most respected global group of companies specializing in ground engineering and environmental services. Employee owned since our formation in 1960, we have created a unique culture with pride in ownership, resulting in long-term organizational stability. Golder professionals take the time to build an understanding of client needs and of the specific environments in which they operate. We continue to expand our technical capabilities and have experienced steady growth with employees now operating from offices located throughout Africa, Asia, Australasia, Europe, North America and South America.

Africa	+ 27 11 254 4800
Asia	+ 852 2562 3658
Australasia	+ 61 3 8862 3500
Europe	+ 356 21 42 30 20
North America	+ 1 800 275 3281
South America	+ 55 21 3095 9500

solutions@golder.com
www.golder.com

Golder Associates Inc.
1335 Dublin Road, Suite 126-D
Columbus, OH
Tel: (614) 486-1700